

Michigan Family Cottages

Great blue Heron & Coopers Portside Guesthouse

Vacation on the best spot on the lake! Awesome open views right on East Lake Mitchell with a beautiful sandy beach frontage. You get the best of both Lake Mitchell and Lake Cadillac being just a stone's throw from the canal. Over 80 feet of expansive private frontage, unobstructed lake views and 100's of feet additional shared resort frontage offers great swimming, sailing, fishing and water sports, right from the private boat dock. Lake Mitchell is 2400 acre all sports lake) attached by a canal to Lake Cadillac (1300 acres) giving water access to historic downtown Cadillac with a verity of shops and cafe's and miles of water life to enjoy. Experience awesome sunsets while enjoying sitting around the fire pit or taking a paddleboat cruise through the state park. Make a gourmet meal in the fully stocked kitchen, grill out on the patio or cook over the outdoor fireplace. Private back patio with outdoor furniture or enjoy the umbrella picnic table lakeside. Those wanting to enjoy local food can just walk across the street to dine at one of Cadillac's best restaurants, lakeside Charlie's. Just a stroll away is also the state park that includes a play area and boat ramp. This property has two cottages. Rent both together and invite family or friends.

Great Blue Heron Cottage

Come inside and experience the eclectic mix of new decor within vintage cottage architecture. There are a total of 4 bedrooms in the Great Blue Heron. Windows span the Living room that overlooks the lake with plenty of new comfortable seating and a LCD flat screen TV. There is also a separate dining room with a fireplace to enjoy dinner or a night of games. An open kitchen has all the amenities you need including microwave, dishwasher and disposal. The spacious bathroom with toilet, sink, shower and tub has a walk through to the large master bedroom. Enjoy the master bedroom's 1940's distressed antique furniture while relaxing on a new Tempur-Pedic Pillow-top while you overlook the lake through the sliding doors. The main floor also includes an up north style bedroom which has a full + twin bunk and a large walk in closet. Upstairs has a nostalgic dormered bedroom with two Victorian twin beds conveniently located near a children's play area. Just through the informal office is the forth very private guest room with a double bed. washer and dryer

Coopers portside Guesthouse

Bungalow cottage has a separate private driveway off of sunset drive. The lakeside living room includes new furniture with full sleeper futon, oversized hearth fireplace and large walk in closet. Enjoy gorgeous views of lake Mitchell or watch new LCD flat screen TV. Galley style kitchen classic to the 1940's era, is fully stocked with appliances, microwave, dishes and all the amenities for a comfortable stay. But why spend a week cooking when you can dine in walking distance at many local venues. Main room is open with antique metal Queen bed draped from the vintage cottage table. Single bathroom includes sink and shower. Outdoor beach chairs, lounge chairs, umbrella table, picnic table and charcoal grill.

Michigan Family Cottages

Great blue Heron & Coopers Portside Guesthouse

Cadillac is a hive of upnorth summer paradise and winter sports too. For skiers we are near Caberfae and Crystal Mountain, for snowmobiler pick up the trails right by the cottage or you can sled directly onto the Lake from the front of the cottage. Cross country ski to your heart's content and for those wanting to icefish, your tipup can be viewed warm and cozy from inside the cottages. Lake Mitchell and Lake Cadillac's large population of bluegill, crappie and perch, as well as walleye, pike and small mouth bass that bite year around. Hike or mountain bike the Manistee National Forest boasting six-hundred thousand acres of pristine wooded wonderland! Manistee and Pine Rivers provide outstanding trout streams for fishing, canoeing, kayaking or a tubing outing. Many renown golf courses located within minutes of the cottage, including The Eldorado, McGuires, and the Rose. Lake Michigan, Manistee, Traverse City, and two casinos are all within a 45 minute drive from Cadillac.



PROPERTY ADDRESS

Michigan Family Cottages
280 South Lake Mitchell Drive
Cadillac, Michigan 49601

Address for Mailing Payments:

Michigan Family Cottages
14824 24th Ave
Marne Michigan 49435

Plan your Visit

<http://www.cadillacmichigan.com/>

Cadillac Page

<http://www.michigan.org/City/Default.aspx?city=G2869>

Cadillac Local Weather

<http://www.michigan.org/Weather/Default.aspx?city=G2869>

Ski Conditions

<http://www.michigan.org/weather/ski-conditions/>

Snowmobile Conditions

<http://www.cadillacwinterpromotions.org/trailconditions.html>



Michigan Family Cottages

Great blue Heron & Coopers Portside Guesthouse

Property Type:

- Cottage Lakefront directly on Lake Mitchell unobstructed views.
- The property offers a white sand beach with boardwalk and large dock.
- The lake has a sugar sand bottom.

General:

- long term renters welcome
- Non-Smoking
- Kid friendly – Children welcome
- Washer and dryer unit
- Pet Friendly: Pets accepted on an individual basis. Additional deposit necessary. Additional cost will be incurred if damages are created, or additional clean-up is necessary.
- Wheelchair inaccessible
- Linens : we recommend bringing your own linens, sheets, bath and beach towels are Furnished at an Additional Cost
- Wood Fireplace: Fireplace with electric insert
- Central heating and fans ceiling fans
- Hair dryers
- Alarm clocks
- Memories that will last a lifetime

Entertainment:

- Wireless internet access
 - LCD Flat screen TV
 - Radio & ipod stereo
 - Books (Kids and Adults)
 - Games (Kids and Adults)
 - Family Video Library
 - VCR
 - Satellite or cab
-
-

Cottage Rooms:

- Living Room
 - Fireplace
 - New furniture
 - Dining
 - Dining area (6),
 - Breakfast table (4),
 - Bar with stools (2)
 - Bathroom
 - 1 Bathroom –
 - Toilet, Sink Tub-Shower
 - Blow dryer
 - Other
 - Informal Office w/ Closet
 - Play area with toys
 - Bedrooms:
 - 4 Bedrooms, Sleeps 10
 - Bedroom Master - 1 double
 - Bedroom 2 - 1 Double, 1 Single bunk
 - Bedroom 3 - 2 Twins
 - Bedroom 4 - 1 Double,
 - Other - 1 Sleep Sofa
 - Kitchen:
 - Refrigerator/freezer
 - Range/Oven
 - Microwave
 - Coffee maker/grinder
 - Toaster
 - Dishes & table service
 - Outdoor plastic dishes
 - Pans/cooking utensils
 - Grill
 - Dishwasher
 - Disposal
 - Electric Griddle
 - Blender
 - Crock pot
 - Pantry
-

Michigan Family Cottages

Great blue Heron & Coopers Portside Guesthouse

Outside:

- Paddle boat
- Boat & oars
- Outdoor grill
- Campfire pit
- Outdoor fireplace
- Outdoor patio furniture
- Umbrella picnic tables
- Boat dock
- Walkway to water
- Beach chairs
- Parking off street (one car each cottage)

Nearby:

- State Park
- State Forrest
- Whitepine trail
- Restaurants
- Adventure family fun park
- ATM
- Hospital
- Coin laundry
- Museums
- Churches
- Cinemas
- Forests
- Library
- Recreation center
- Autumn Color Tours
- Playground
- Fitness center
- Groceries
- 45 Min from Traverse City
- 45 Min from Manistee

Local Activities:

- Swimming
 - Freshwater Fishing
 - Sailing
 - Motor Boating
 - Paddle boating
 - Water Sports
 - Golfing
 - Kayaking/Canoeing
 - Jet skiing
 - Hiking/walking
 - Horseback riding
 - Downhill skiing
 - Cross country skiing
 - Snowboarding
 - Snowshoeing
 - Snowmobiling
 - Sledding/Tubing
 - Ice skating
 - Fly fishing
 - Ice fishing
 - Hunting
 - Tubing
 - Wildlife observation
 - Bird watching
 - Dog sledding
 - Inline skating/Rollerblading
 - Antiquing
 - Cinemas/Movie Theaters
 - Miniature golfing
 - GPS-Geocaching
 - Tennis
 - Shopping
 - Dining
 - Sight seeing/scenic drives
-

Michigan Family Cottages

Great blue Heron & Coopers Portside Guesthouse

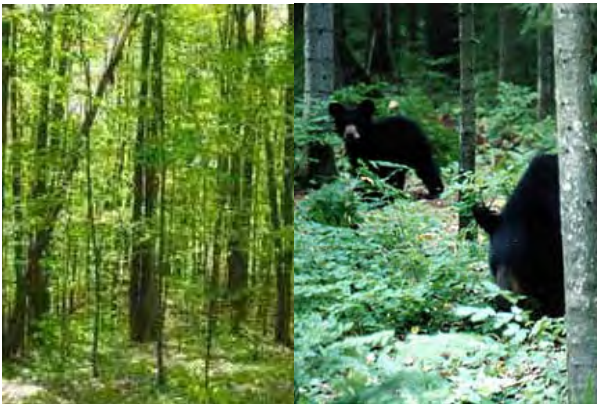
Relax and watch the Sunset on the lake



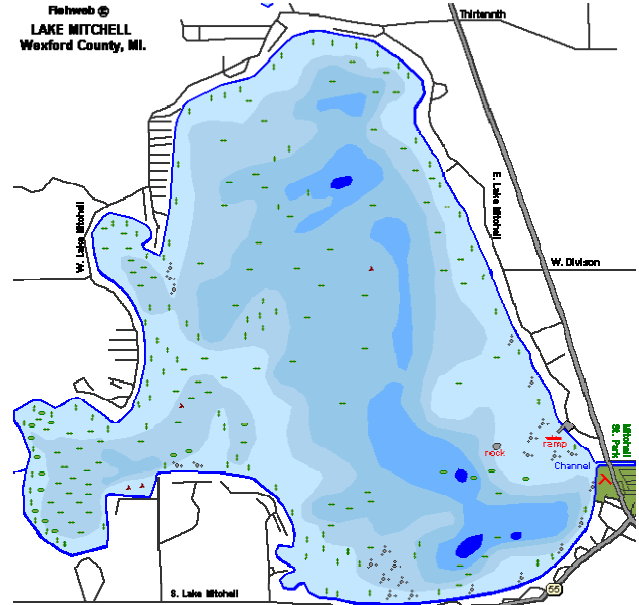
Lake Mitchell is great for water sports



Hike the State Forrest



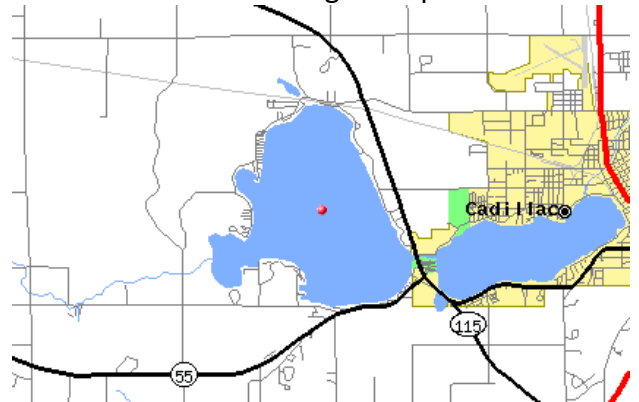
Fishing lake map



Enjoy the state Park walk along the lake



Both Lakes on the Michigan map



Cannel gives you the best of both lakes

**Michigan Family Cottages
Great blue Heron & Coopers Portside Guesthouse**



Michigan Family Cottages Great blue Heron & Coopers Portside Guesthouse

Both Cottages from the water



View of cottage from air



Both cottages side view



Beach in front of cottages



Front of Great Blue Heron



Back of Blue Heron



Michigan Family Cottages

Great blue Heron & Coopers Portside Guesthouse

Kitchen to the bath



Living room view (prior to new furniture)



Kitchen View of lake



Living room view (prior to new furniture)



Dining Room



Living room view (prior to new furniture)



Master Bedroom

Michigan Family Cottages Great blue Heron & Coopers Portside Guesthouse



Master bedroom



Vintage French Twins



Upstairs informal office



Bedroom 4



Up north bedroom #2 (Now has full twin bunk)



Michigan Family Cottages

Great blue Heron & Coopers Portside Guesthouse

Portside Guest cottage



Living room



Main room with cottage table



Studio Queen



Kitchen



Front room with fireplace & View of lake

